

Infare

The market's most advanced Competitive Web Fare Data

**7 unique displays to help
airlines gain competitive advantage**



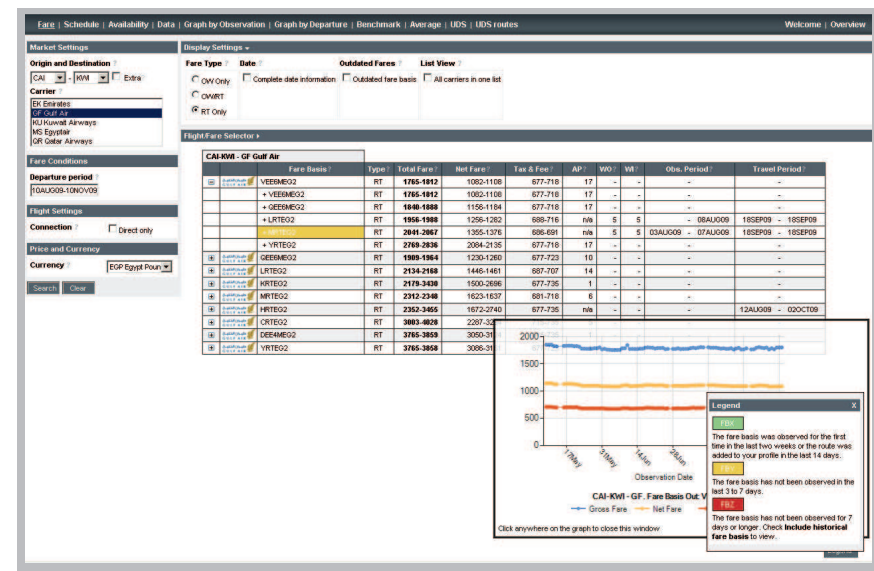
infare
solutions

Infare Knowledge – Fare Display

Is there an easy way to identify the extent of a fare campaign?

This module enables you to instantly identify your position in the marketplace by providing an overview of all fares, including web-only ones, for a departure period or day that you define (based on the previous 90 days). It:

- Provides the complete fare range, including buying and travel period conditions
- Identifies whether fares are sold out or still available for purchase
- Demonstrates the full range of offered RT as well as OW fares
- Analyses the advance purchase structure, fare by fare
- Determines whether or not there is a minimum stay rule on return fares
- Identifies restricted travel days on both outbound and homebound segments
- Displays full campaign requirements for buying as well as travelling



Infare Knowledge – Availability Display

Get a realistic look at promotional fares and market conditions

Based on historical data collected by scheduled and consistent search patterns and observations, this module calculates for which departure time and weekday each fare is offered for sale and within how many days of advance purchase. This module enables you to:

- Compare wing-to-wing, your own inventory steering with that of other airlines
- View availability of outbound leg as well as homebound leg
- Take advantage of the option to adjust data foundation
- View fares as net or all-inclusive
- View departures by time or flight number
- Search One-Way (OW) or Return (RT) fares with or without minimum stay
- View O&Ds as direct or 1-stop connections

Market Settings: **Origin and Destination** LGA - DTW **Carrier** NW/Northwest Airlines **Flight Settings** **Connection** Direct only **Price and Currency** USD United States

Display Settings: **Departure Weeks** 11MAY-07JUN 18MAY-28MAY 25MAY-31MAY 01JUN-07JUN 08JUN-14JUN 15JUN-21JUN 22JUN-28JUN 29JUN-05JUL 06JUL-12JUL 13JUL-19JUL 20JUL-26JUL 27JUL-02AUG 03AUG-09AUG **AP output** Average AP Minimum AP **Display** Show only one row per flight Hide fares with no AP info

Flight Fare Selector

NWA	KDTOLISM	Type	Total Fare							Tax & Fee	
			RT	Mon	Tue	Wed	Thu	Fri	Sat		Sun
OW	FlightNo	Dep. Time	Cnx	Mon	Tue	Wed	Thu	Fri	Sat	Sun	
LGA-DTW	NW627	06:00									
LGA-DTW	NW541	06:00*		47	62	63		47	63	49	
LGA-DTW	NW533	07:25		64	82	83	84	51			
LGA-DTW	NW1199	09:00									
LGA-DTW	NW545	09:00									
LGA-DTW	NW537	09:00		68	82	83	83	54	45		
LGA-DTW	NW529	10:25*		61	62	63	53	51	52	53	
LGA-DTW	NW595	12:38		64	68	83		51	45		
LGA-DTW	NW531	14:25*		47	51	63	68	51	45	55	
LGA-DTW	NW1199	16:15*		61	62	63	57	51	57		
LGA-DTW	NW1547	17:38*		68		83	57	53	52	53	
LGA-DTW	NW529	18:45*									
LGA-DTW	NW466	19:00		54			43	51		53	
LGA-DTW	NW468	19:00								52	
LGA-DTW	NW627	19:45*		68	51		53	51		53	

NWA	KDTOLISM	Type	Total Fare							Tax & Fee	
			RT	Mon	Tue	Wed	Thu	Fri	Sat		Sun
OW	FlightNo	Dep. Time	Cnx	Mon	Tue	Wed	Thu	Fri <td>Sat</td> <td>Sun</td> <td></td>	Sat	Sun	
LGA-DTW	NW627	06:00									
LGA-DTW	NW541	06:00*		68	62	53	61	62	59	59	
LGA-DTW	NW533	07:25		68	68	53	61	68			
LGA-DTW	NW1199	09:00									
LGA-DTW	NW545	09:00									
LGA-DTW	NW537	09:00									
LGA-DTW	NW529	10:25*									
LGA-DTW	NW595	12:38		68	68	53	61		59		

Legend

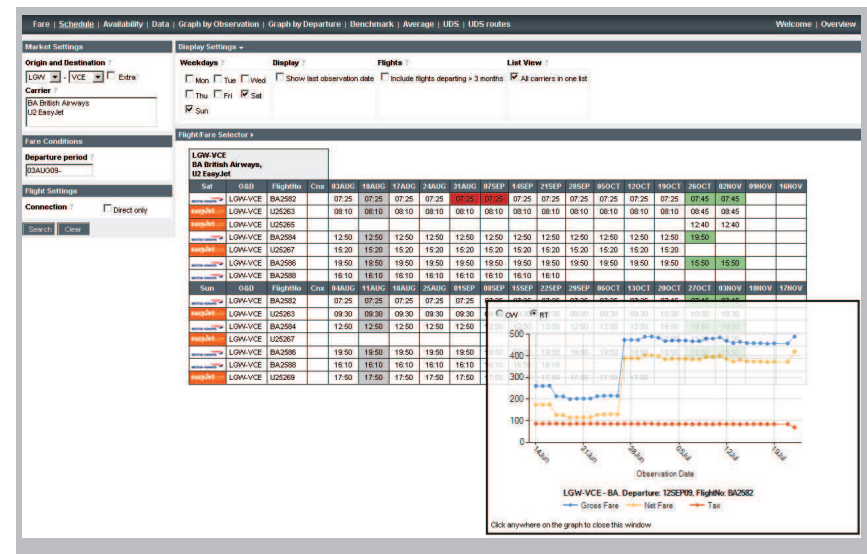
- 10 Observed within 28 days of departure
- 42 Observed within 29 and 90 days of departure
- Fare basis not observed with this flight, but seen with lower price elsewhere.
- Fare basis never observed with this flight.
- No flight

Infare Knowledge – Schedule Display

Can you monitor changes to other airlines' operating schedules?

This display provides flight schedules now and in the next 8 weeks – included all relevant changes found on the web

- Time-to-market information on schedule changes, time changes, additions or deletions to a carrier's schedule
- New flights or cancellations, highlighted for easy reference
- Timeline of departures extending 8 weeks into the past and 8 weeks into the future



Infare Knowledge – Graph Display

Where in the market do you want to position yourself?

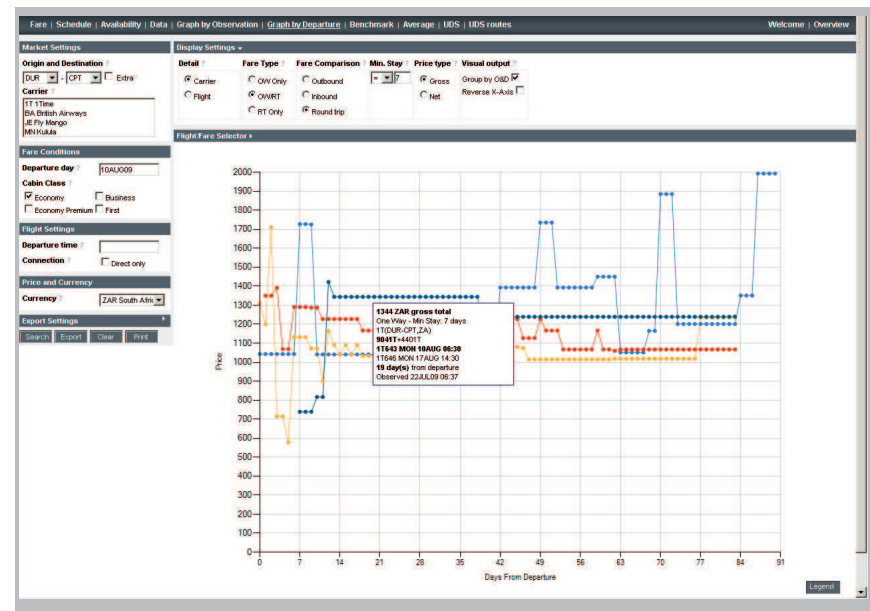
Unlike random data collection, our daily collected data provides a comprehensive picture of the fare structure, so you can benchmark your position against other airlines' steering strategies and hidden rules.

Two distinct features of the Graph Display Module are:

- Lowest fare by observation day
Get a clear picture of the development of the lowest available fare per day up until departure
- Lowest fare by flight number and departure time
Choose between flight numbers and departure times and compare results, wing-to-wing, per departure day

Additional features of the Graph Display Module:

- Ability to identify the outbound and inbound components of a round-trip fare and make it comparable with a one-way fare
- Comparison of two markets in the same analysis
- Instant update activated by the user
- Displays of net fares and taxes/surcharges
- Data that can be exported to Excel



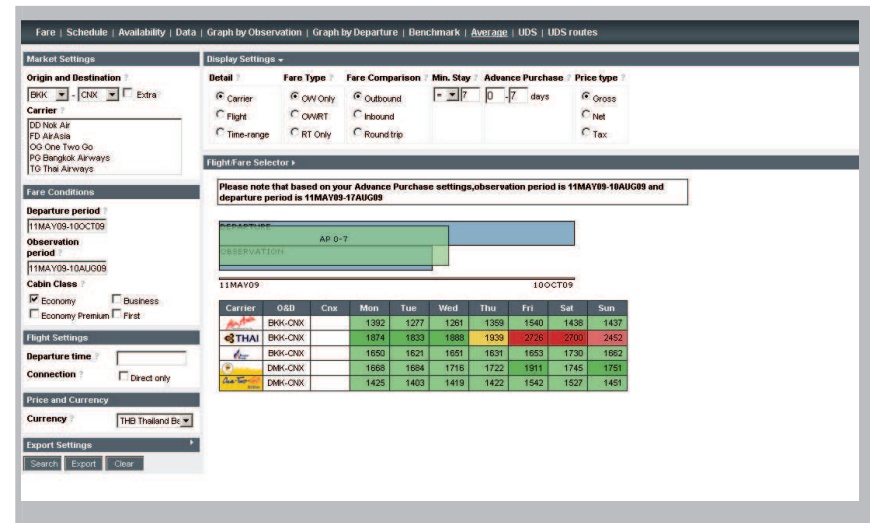
Infare Knowledge – Average Display

Powerful and unique way of viewing Average Fares observed online

The very first display to bring you average fares based on observations made on the web.

Track yourself and competition based on your own booking pattern.

- See average fares based on Advance Purchase settings
- Season-to-season comparison
- View average per weekday per flight no or departure time band



Infare Knowledge – User Defined Searches

Real time User Defined Searches – on any route – anywhere – any time

The most advanced real time search function in the market

- Based on worldwide scheduling data
- Choose Origin/Destination – system suggests carriers and connections
- Includes Online Travel Agents
- See results in either list view or graph view

The screenshot displays the Infare Knowledge search interface. The top navigation bar includes links for Fare, Schedule, Availability, Data, Graph by Observation, Graph by Departure, Benchmark, Average, UDS, and UDS routes. The main interface is divided into several sections:

- Market Settings:** Origin (LON), Destination (NYC).
- Connection:** Radio buttons for Direct Only and Allow Transfer.
- Fare Conditions:** Departure period (2009-12-01 to 2010-12-31), Fare type (OW or RT), Minimum stay (7), and Include Code Share (Yes or No).
- General Settings:** Email (jensc@infare.c), Identify Markets (Clear).
- Online Travel Agencies:** A list of checkboxes for various OTAs like Air Princess, CheapTickets, Despegar, etc.
- Wildcard Search:** A section for advanced search options.
- Display Settings:** A dropdown menu for view options.
- Results Table:** A table with columns: Web Site, Site Code, POS, ORI, DEST, POD, CHR, Code Share, Cabin Class, and Notes. It lists various flight routes from LON to NYC, including carriers like Delta, Atlantic, British Airways, and Air Canada.



About Infare

Established in 2001, Infare Solutions supply fare data to the largest airlines as well as to smaller airlines in all parts of the world on Infare.net or for integration directly into all major Revenue Management and pricing systems.

Please contact us:

Infare Solutions A/S
Groennegade 18, 1st floor
DK-1107 Copenhagen K
Phone: +45 3336 2525
Mail: info@infare.com
www.infare.com